

2000



K A R M A N N  
*Ghia*



*In* the Karmann-Ghia Coupé, master body stylists have created an ultra-smart car that has already proved itself on the highways of five continents. This is not a success simply of timeless distinction and chic silhouette, but rather the happy combination of a superb body with the Volkswagen chassis and its incomparable engine, known to millions the world over. The charm of the coupé is in every respect a match for the mechanical perfection of the automobile.

People who feel that driving can be a luxury, and who want an exclusive personal touch without sacrificing the familiar Volkswagen dependability, economy, and high resale value, are turning in ever greater numbers to the Karmann-Ghia.

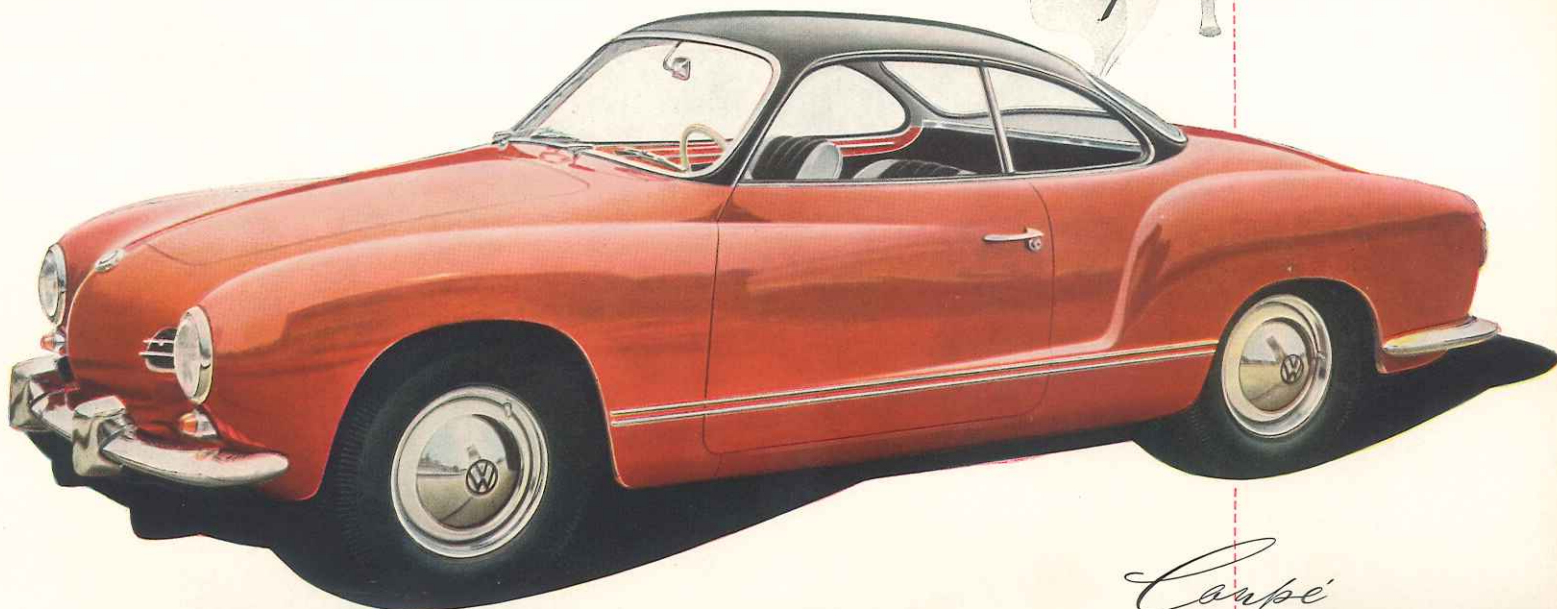


Extra large doors with ample side pockets and comfortable arm rests make it easy to sit down on the broad, overstuffed seats, each individually adjustable.

The back of the rear seat is folded forward: this more than doubles the rear luggage space, generous enough to begin with. With the back erect, you have an additional cushioned seat, ready for quick trips with four in the car.



K A R M A N N  
*Ghia*



*Coupe*





## SPECIFICATIONS

*VW chassis and power plant* air-cooled, o. h. v., VW engine, rear-mounted, horizontally opposed,

S. A. E. h. p. 36,  
displacement 72.740 cu. in. (1192 c. c.),  
oil cooler, synchromesh transmission,  
hydraulic brakes operating on 4 wheels,  
independent suspension of all 4 wheels,  
torsion bar springing.

*Wheelbase* 94.5 in.

*Track* front 50.8 in., rear 49.2 in.

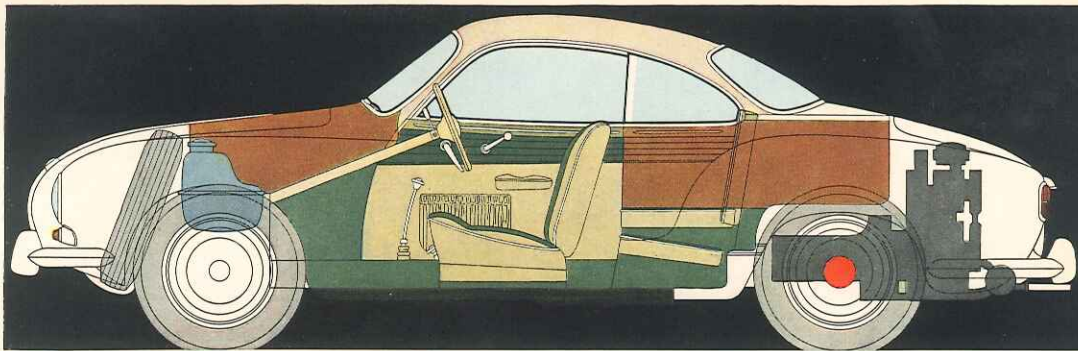
*Weights in lbs.* weight empty 1786, payload 661,  
permiss. total weight 2447

*Overall dimensions* length 163 in., width 64.2 in.  
height 52.2 in.

*Fuel tank capacity* 10.6 U. S. gal., 8.75 Imp. gal. incl.  
1.3 U. S. gal., 1.1 Imp. gal. reserve

*Performance* average fuel consumption:  
32 m. p. g. (U. S.), 38 m. p. g. (Imp.),  
max. and cruising speed over 70 m. p. h.

*Climbing ability* 1st gear 19.5° (34%), 2nd gear 9.5° (17%),  
3rd gear 6° (10.5%), 4th gear 3° (5.5%)



*Presented by:*

**VOLKSWAGENWERK GMBH  
WOLFSBURG · GERMANY**